

# Abesca

## **F**AST INSTALLATION & FAST REMOTION

- Fast assembly and disassembly
- Zero maintenance
- Immediate removal in case of barrier reposition

## **A**DAPTABLE

- Different barrier installation set up (temporary or permanent)

## **S**USTAINABLE & SMART

- Materials with highest environmental sustainability - EPD Certification
- Polymer fibers - Zero debris
- Abesca Smart system with LED lighting and accident detection device

## **T**URNABLE

- FAST connection system allows curvature radii of minimum 100 m



# Abesca

www.abesca.com  
info@abesca.com | +39 335523372  
Via E. Vanoni, 24 23017 | Morbegno (SO) | Italy

## ABESCA H120 FAST

Fast & Safety

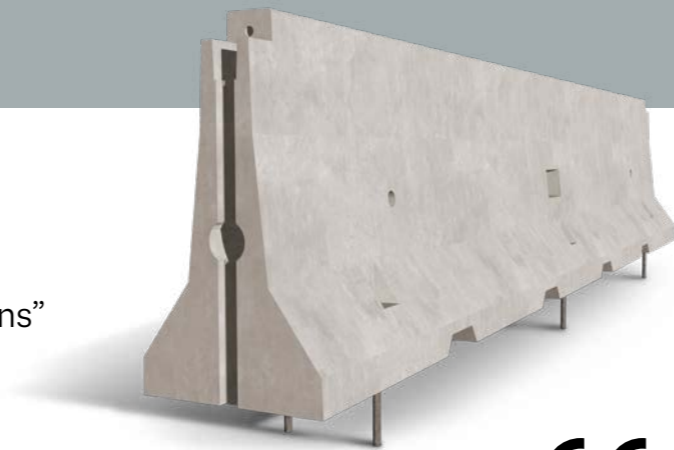


### Abesca H120 FAST H4b – W2

#### Single line barrier for central reserve and side edge

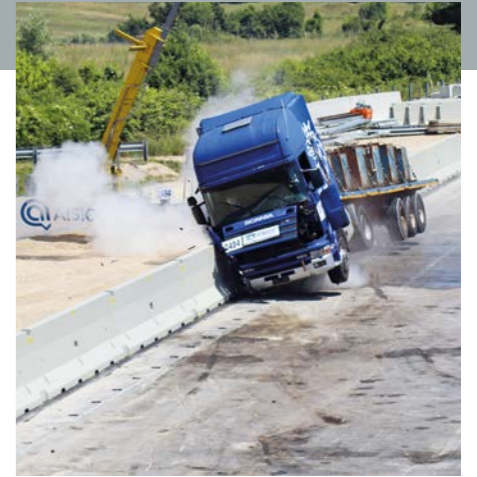
Placed on asphalt and pinned by 6 anchoring “pins” with reduced insertion (max. 290 mm), easily removable and inspectable.

FAST connection system allows quick installation, easily removable and replacement in case of impact.



#### H120 W2 FAST

CONTAINMENT LEVEL	H4b
ASI	B
WORKING WIDTH	W2
VEHICLE INTRUSION	VI7
LENGTH	5,99 m
HEIGHT	1,2 m
WEIGHT	4900 kg



### Abesca H120 FAST CONCRETE H4b – W2

#### Single line barrier on curb for centrale reserve

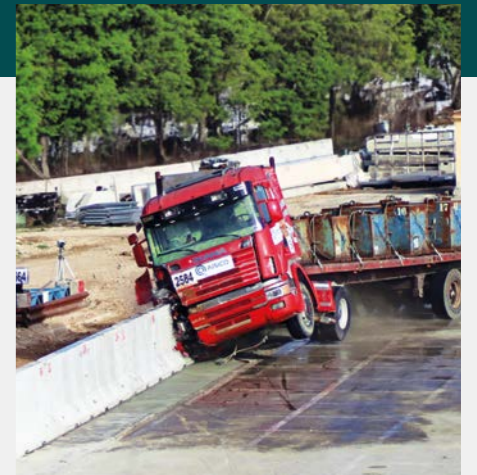
Anchored on concrete curb by 6 anchors with reduced insertion (max. 120 mm).

FAST connection system allows quick installation, easily removable and replacement in case of impact.



#### H120 W2 FAST CONCRETE

CONTAINMENT LEVEL	H4b
ASI	B
WORKING WIDTH	W2
VEHICLE INTRUSION	VI7
LENGTH	5,99 m
HEIGHT	1,2 m
WEIGHT	4900 kg



### Abesca H120 FAST H4b – W5

#### Single line barrier for central reserve and side edge

Free standing on asphalt.

FAST connection system allows quick installation, easily removable and replacement in case of impact.



#### H120 W5 FAST

CONTAINMENT LEVEL	H4b
ASI	B
WORKING WIDTH	W5
VEHICLE INTRUSION	VI8
LENGTH	5,99 m
HEIGHT	1,2 m
WEIGHT	4900 kg

