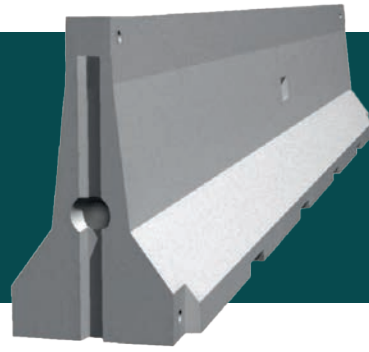


ABESCA S102



ABESCA S102 - H2 - W3 SINGLE LINE BARRIER FOR CENTRAL RESERVE AND SIDE EDGE

Road safety barrier 1.0 m high, H2 containment level.

Placed on asphalt and pinned by steel post.



TECHNICAL FEATURES	S102 - H2 - W3
BARRIER	S102
LENGTH	6,19 m
HEIGHT	100 cm
BASE	62 cm
WEIGHT	3600 kg
ANCHORED BARRIER	✓
ANCHORED TERMINALS	✓
CE CERTIFICATION	✓

CRASH TEST - EN 1317	S102 - H2 - W3
ASI	B
CONTAINMENT LEVEL	H2
NORMALIZED WORKING WIDTH	W3
NORMALIZED DYNAMIC DEFLECTION	0,4 m
NORMALIZED VEHICLE INTRUSION	VI3
TEST LENGHT INCLUDING TERMINAL	72,2 m