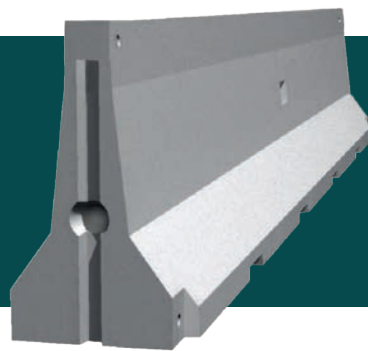


ABESCA S100



ABESCA S100 - H1 - W5 SINGLE LINE BARRIER FOR CENTRAL RESERVE AND SIDE EDGE

Road safety barrier 1.0 m high, H1 containment level.

Placed on asphalt and pinned by steel post



TECHNICAL FEATURES	S100 - H1 - W5
BARRIER	S100
LENGTH	6,19 m
HEIGHT	100 cm
BASE	62 cm
WEIGHT	3600 kg
ANCHORED BARRIER	X
ANCHORED TERMINALS	X
CE CERTIFICATION	✓

CRASH TEST - EN 1317	S100 - H1 - W5
ASI	B
CONTAINMENT LEVEL	H1
NORMALIZED WORKING WIDTH	W5
NORMALIZED DYNAMIC DEFLECTION	0,9 m
NORMALIZED VEHICLE INTRUSION	V15
TEST LENGTH INCLUDING TERMINAL	72,2 m